



# NEWSLETTER DEC'16

## news

- **ELN Cyprus week last November was a great success**
- **ELN event in 1-3 Feb. (Jyväskylä) will include WG1+WG2 workshop, and MC and SG meetings**
- **Help us to maximize ELN impact through social networks**
- **Each ELN member is kindly asked to bring a colleague to ELN during 2017!**

## greetings from the chair

Dear ELN members, dear Colleagues,

We are halfway through it, and we are beginning to see how the ELN Association will look like. We are becoming a large, noticeable, and dense network, but we need to double ELN's membership, for it to become a truly worldwide literacy network. As we turn more and more noticeable, you might want to engage all your bright collaborators from all over the world in the network. Next year is crucial for our aims, along with our ongoing intensive WGs scientific work, we will also be discussing the ELN Charter and actively building the foundations of a worldwide association that advances Literacy Science by promoting networking, fostering early stage researchers' capabilities, bridging the gap between literacy science and education, and by spreading humanistic values. For me, leading this effort is being a truly humbling and honoring experience.

A joyful holidays season and our best to you all in the New Year of 2017!

Rui A. Alves



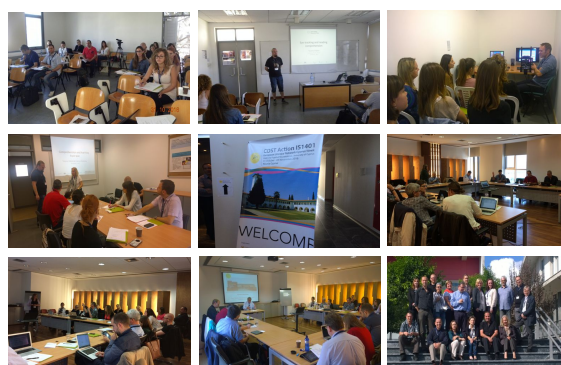
## eln cyprus week

### Training School on Eye-Tracking

The 3<sup>rd</sup> ELN TS included lectures and hands-on practice on using eye-tracking. It counted 16 ESRs from 7 countries, who gained substantial experience in using this methodology.

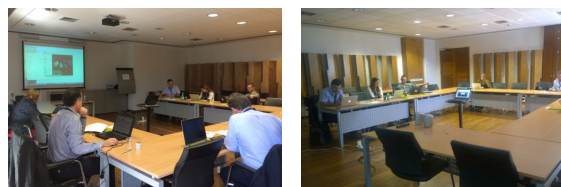
### WG1+WG3 Workshop

24 ELN members from 12 countries participated in the workshop, which provided the opportunity for WG members to be informed about the activities that are underway and to plan the next phases of their actions.



## sg meeting #4

The fourth meeting of the Action's Steering Group took place in Nicosia on the 3<sup>rd</sup> of November. The SG reviewed the previous GP and discussed the Working Plan and Budget for the remaining months of GP3 (until April 2017). This meeting was also important to define a plan to complete the 24-months monitoring report for the Action's assessment by the Action's Rapporteur, as well as to discuss the works being carried out in each particular domain of SG activity.



# calendar

**dec** 24 months progress report submitted  
**jan** Call for organizing TS until 2018  
**feb 1** SG meeting #5, Jyväskylä  
**feb 1** Editorial meeting #2, Jyväskylä

**feb 2** MC meeting #3, Jyväskylä  
**feb 2-3** WG1+WG2 workshop, Jyväskylä  
**mar 30-31** WG2+WG3 workshop, Zagreb

## eln on social networks

ELN is on Twitter and Facebook. By following us online, you will be able to keep up with the ELN activities, stay connected and interact with other members, and contribute to broadcast our work across different channels.

**Twitter:** [www.twitter.com/ELNcost](http://www.twitter.com/ELNcost)

When you tweet about calls or events, the info will become visible immediately not only to the network members but also to a wider audience.

- Tweet to ELN by adding @ELNcost
- Use the hashtag #ELNcost
- During the ELN events, encourage participants to tweet and make the above hashtag visible

**Facebook:** [www.facebook.com/is1401eln](http://www.facebook.com/is1401eln)

So far less than 20% of our members are following our Facebook account. Please, join ELN on Facebook and invite other people to be part of this network.

- Like the page to follow the content
- Interact with the posts: add likes and comments
- Write something on this page to disseminate open calls, future events, and any other notes
- Send us photos of your ELN-related activities (e.g., STSM, TS, etc.) so we can post them

Help us to strengthen ELN presence in social networks and reach the public at large. If you don't have a Twitter or Facebook account, create one and just give it a go!

## project on thesis writing

This project aims to explore dissertation/thesis writing from the student writers' perspectives, in a variety of European contexts and languages. The first stage, currently in progress, involves development of the methodological approach (completed), collection of preliminary data from team members' countries using the same methodology (completed), evaluation of the methodological tool (next stage), data analysis (next stage) and planning of longitudinal research (to start after the meeting in Finland, 2017).

**Contact:** Bojana Petric and Mira Bekar

## eln progress report

During the previous month we have been working on the 24-month progress report, which was already submitted with great success. Several ELN members help us on this by sending their relevant publications, projects, and communications in 2015-2016. We gathered a considerable list and the compiled information will be disseminated in our website very soon.

**We thank ELN members who contributed to the report**

## stsm grantees 2016/17

**Catherine Meulemans** (Belgium) to visit  
Victoria Johansson (Sweden)

**Helen Limon** (UK) to visit  
Deborah Soria (Italy)

**Lise Paesen** (Belgium) to visit  
Victoria Johansson (Sweden)

**Maria Bougioukou** (Greece) to visit  
Jule Dockrell (UK)

**Naymé Salas** (Spain) to visit  
Teresa Limpo (Portugal)

**Teresa Limpo** (Portugal) to visit  
Kausalai Wijekumar (US)

**Trinidad García** (Spain) to visit  
Rui A. Alves (Portugal)

**New call for STSMs will open soon**

## new year suggestion

An important goal to achieve during the next year is to double the number of ELN members. To that end we are encouraging each ELN member to introduce the network to at least one colleague. We are particularly focused on engaging PhD students as well as colleagues with exceptional expertise in literacy research.

**Bring one member to ELN!**

### credits

Newsletter design and contents management: Teresa Limpo.  
We thank all ELN members who contributed with photos for this newsletter.